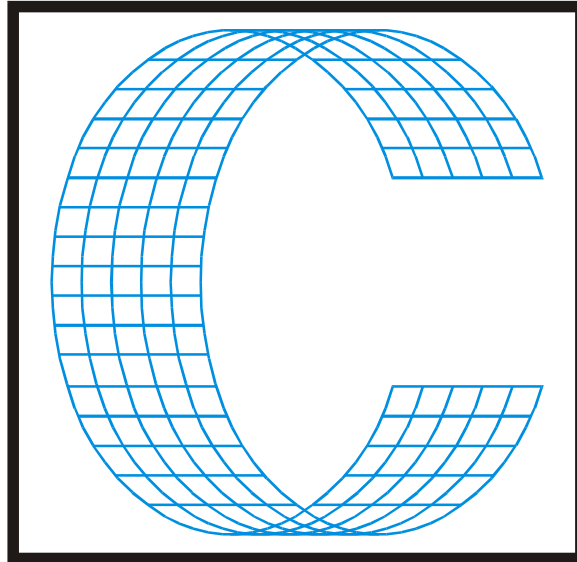


# *CimCAD Version 17.0*



*cimex*®

## ***Cimex Corporation***

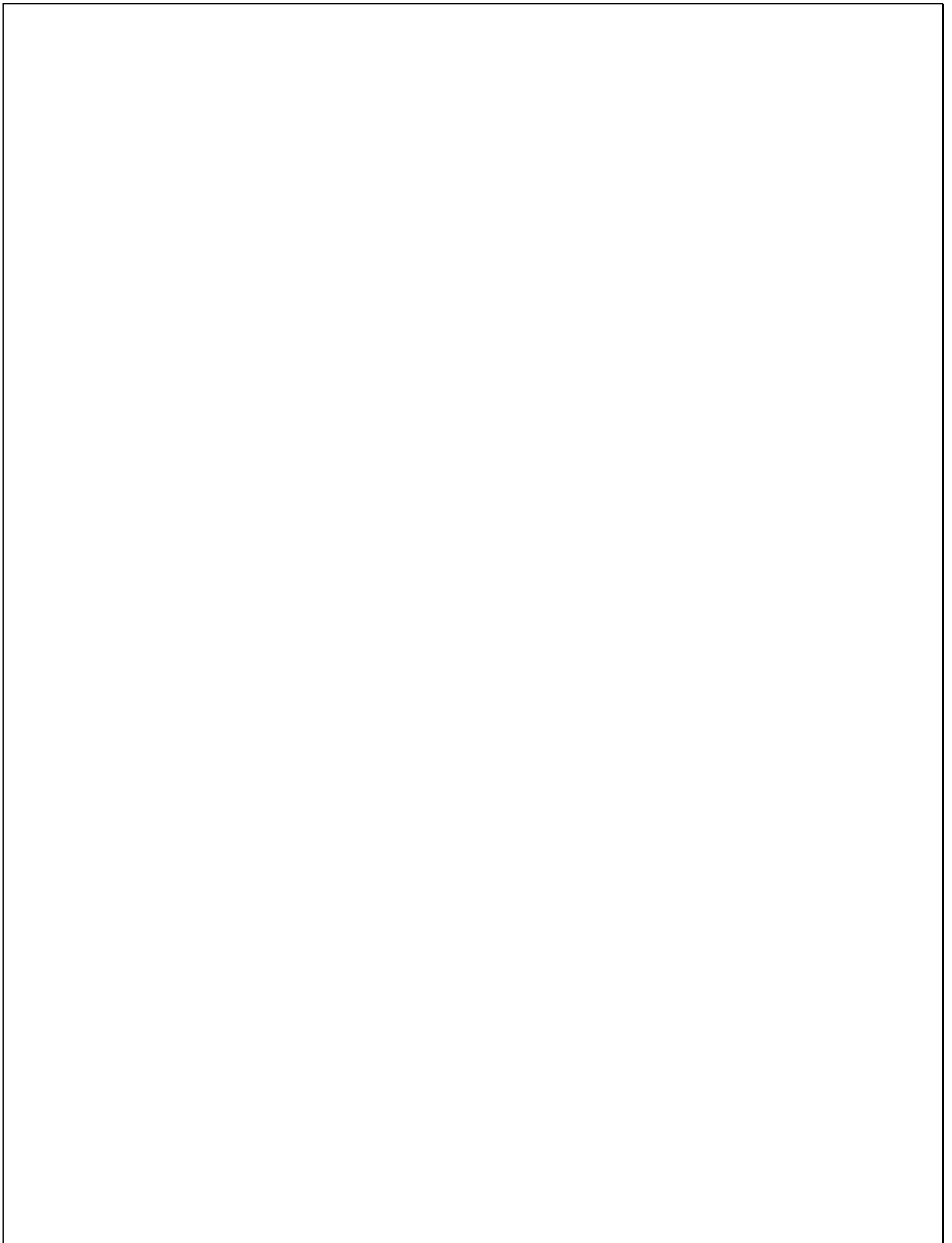
30 Front Street, Suite #2  
Belchertown, MA 01007  
USA

Phone (413) 323-1090

Fax (413) 323-1096

[www.cimexcorp.com](http://www.cimexcorp.com)

E-Mail [info@cimexcorp.com](mailto:info@cimexcorp.com)



## CAD Portion of the Program

### Database & Forms

Control over data sources has been enhanced in multiple ways:

**Define Data Source**

**Basic Info**

Category: Date & Time

Description: Due Date

Identifier: DUEDATE

Source:  User Input  Macro  Global Variable  Parametric

Sync with DB: Write to database

Variable: &DUEDATE

Type of Data: Date

Default:

Keep this information confidential (don't email it)

**Interface**

Label: Due Date:

Control: Date/time picker

Response may be typed, rather than chosen from the list

Allow users to add or edit the pick-list choices

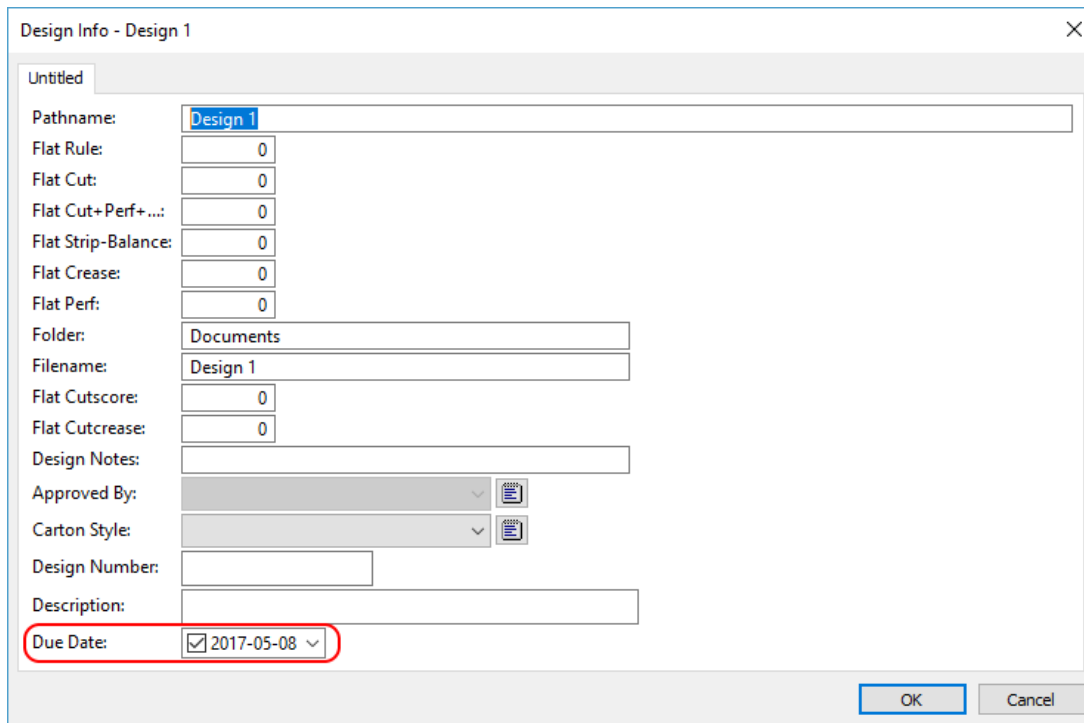
Format: Default Configure Defaults

OK Cancel

Database data sources can now be read-only, read-write, or write-only (the default, and the way they have always been in past releases). This can allow you to synchronize your data with external software which can now update fields in the Cimex database and have that information automatically reflected into your designs. It is up to your IT dept. to implement access and set such information in the Cimex database if

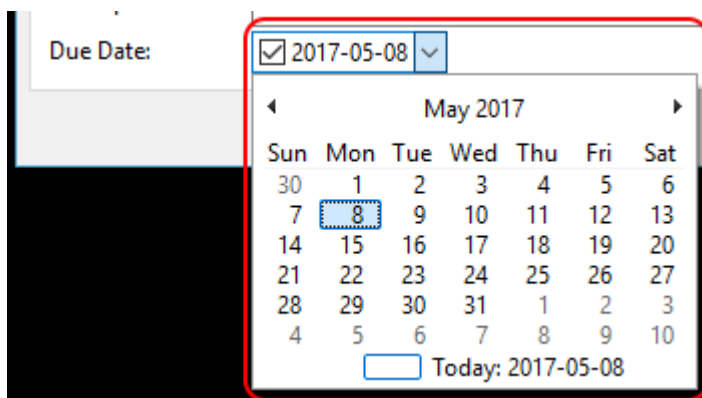
this functionality is desired at your workplace. We have merely opened the door to make it possible. However, what you do with this is entirely up to you.

There is now support for a date, time, and timestamp picker interface & data integrity checking



The screenshot shows a dialog box titled "Design Info - Design 1". It contains several input fields for design parameters, including "Pathname" (Design 1), "Flat Rule" (0), "Flat Cut" (0), "Flat Cut+Perf+..." (0), "Flat Strip-Balance" (0), "Flat Crease" (0), "Flat Perf" (0), "Folder" (Documents), "Filename" (Design 1), "Flat Cutscore" (0), "Flat Cutcrease" (0), "Design Notes", "Approved By", "Carton Style", "Design Number", and "Description". The "Due Date" field is highlighted with a red box and contains a checked checkbox and the date "2017-05-08".

This can be expanded to input a date through a calendar date-picker interface (one of several interface options):

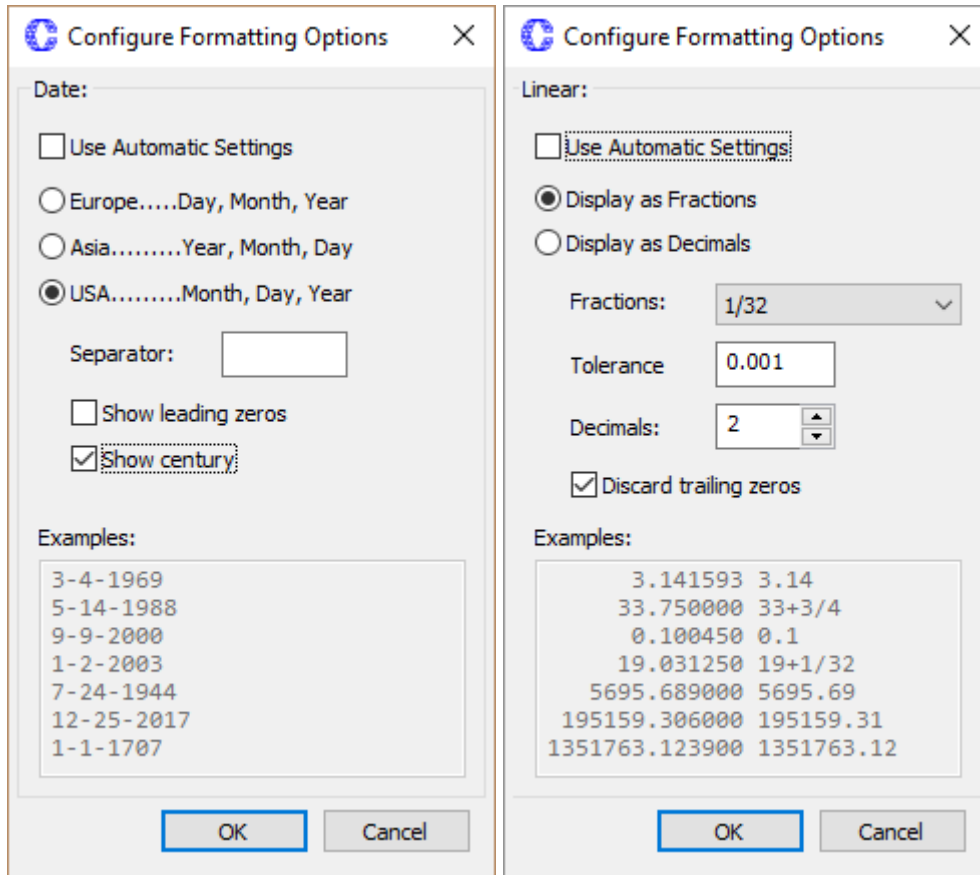


The close-up shows the "Due Date" field with a checked checkbox and the date "2017-05-08". A calendar date-picker interface is open, showing the month of May 2017. The date "8" is selected and highlighted with a blue dashed border. The calendar shows the following dates:

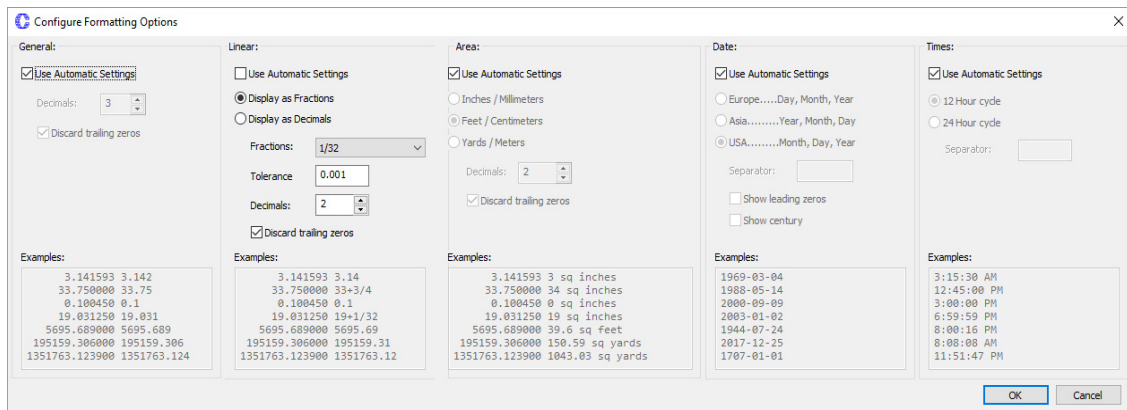
Sun	Mon	Tue	Wed	Thu	Fri	Sat
30	1	2	3	4	5	6
7	8	9	10	11	12	13
14	15	16	17	18	19	20
21	22	23	24	25	26	27
28	29	30	31	1	2	3
4	5	6	7	8	9	10

Today: 2017-05-08

Enhanced formatting options for all data sources have been added. Each data format has sophisticated controls for you to specify how you wish to view and interact with your data, such as the new date formatting options:



Global defaults can be set under: Edit | Preferences | Data Formatting:



Enhanced data & time handling to use 4-digit dates (with century), so as to ensure integrity of information from and to the database

Database Setup & Edit Data Sources are better about telling you what the minimum version requirements are, and being clearer about what the implications are going to be if you choose to edit them in 17.0.

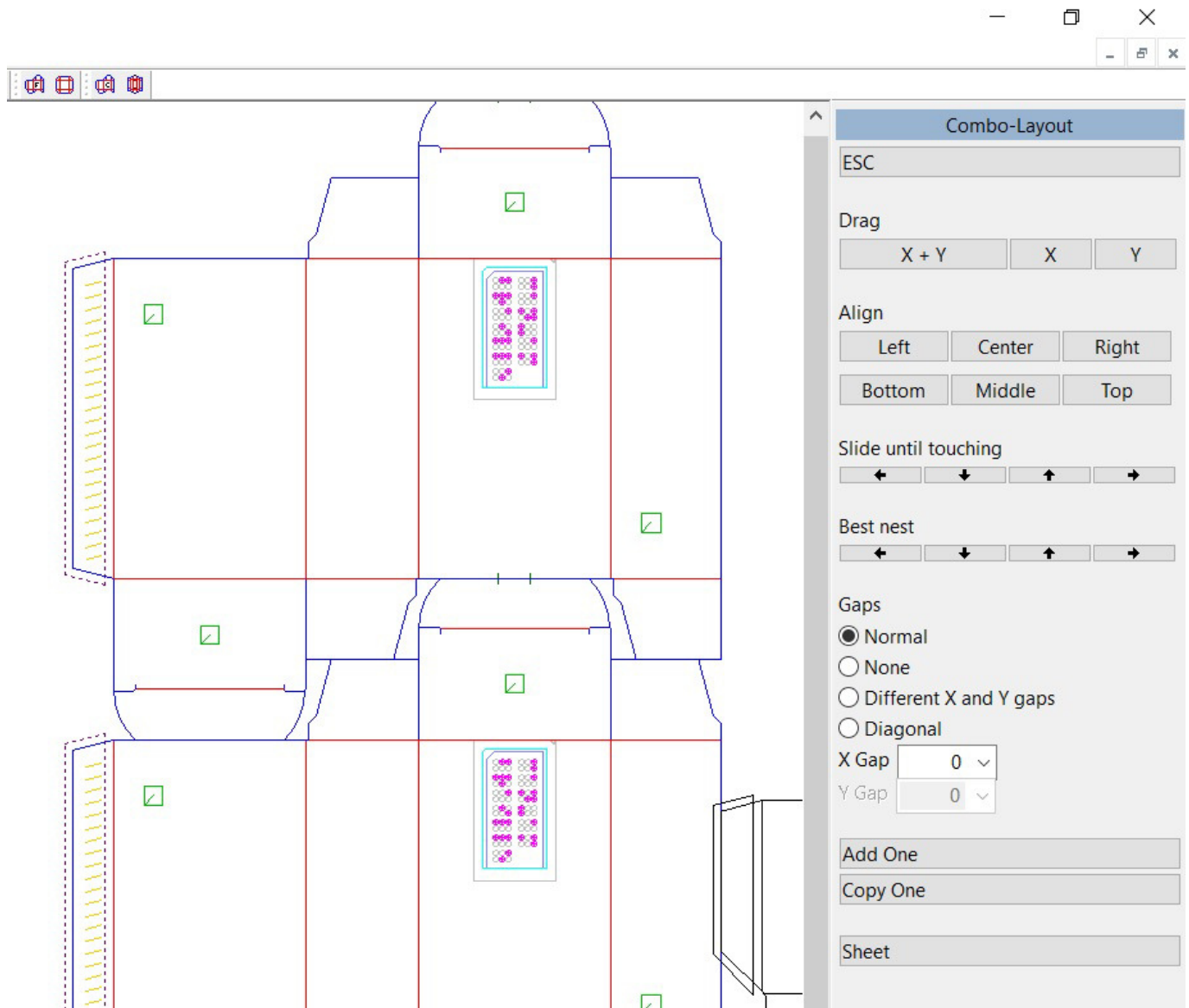
When 17 is initially installed, a backup of your database configuration is automatically created for you in order to protect against accidental upgrades or changes which you wish to revert from.

A custom data source to calculate the length of all lines of any custom line type that you add to CimPACK (irrespective of pointages) is automatically created for you for all such custom line types. You can add them to your database or forms as any other data source can be.

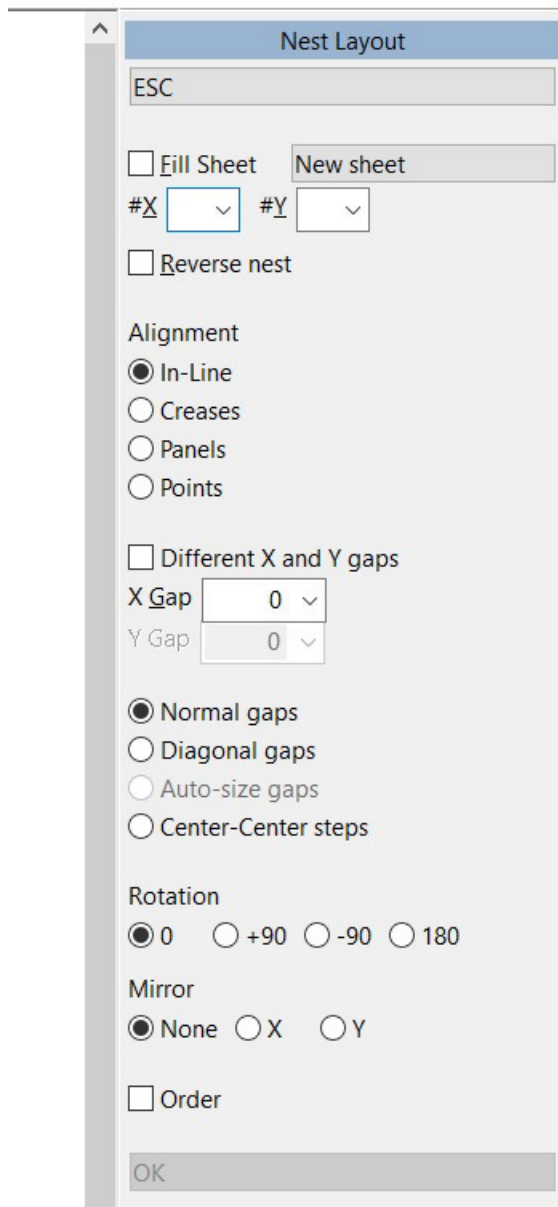
Data Sources generally run much faster now, so saving a design is quicker

### Layouts

A new menu for Combo Layouts was created which speeds up the positioning process for additional designs.



The Nest Layout menu is now much more interactive. If the layout X or Y gaps are changed, the layout is regenerated with those gaps automatically. The same is also true if the boxes are rotated (+90 for example), then the layout is automatically regenerated. Similarly, if you change the quantities in X & Y and the layout is regenerated.



### **Dynamic Menus & Dialogs & Property Sheets**

Enhanced layout options to allow for more sophisticated interfaces with arbitrarily nested blocks

Now supports PNG, JPG, GIF, etc., in addition to .BMP files

The macro language can now dynamically manipulate associated images at runtime

Buttons can have both a label and an image visible

## **Miscellaneous**

The installer was improved to refer to existing locals, rather than existing installs (since you upgrade from a previous configuration, not from a previous single install in some cases) The installer also now gives better feedback about what's about to happen (new install, additional install, etc.)

Lots of consolidation of code happened under the hood to make various parts of the software all work and act the same, such as the following:

- a. Standardized most Message Box interface
- b. Dialogs remember where you put them
- c. Dialogs remember their location relative to the application window
- d. Dialogs size themselves relative to their parent window
- e. Many more subtle behaviors are shared and therefore behave the same in all locations in the software

Enhanced support for PAR(215) – Beep: Visual / Silent / Standard so that this is respected in almost all cases (except during startup & shutdown when our core libraries cannot be relied upon we must rely upon the OS's facilities).

Many speed improvements were implemented (including faster startup after a reboot of the PC, and faster data crunching for database and forms).

A number of improvements made to Import and Export of DXF, PDF, DDES3, etc., for example when you import a DDES3 file it now sets up tags for perforations and cutcrease, which show up in the Info menu

A bunch of new macro functions & engine functions were added (see updated Macro Language Syntax help for more information)

When dragging lines, we now optionally show both the unsnapped and the snapped lines.

An Edit Group option was added, similar in concept to editing a subroutine.

The Stretch Menu now has an option to stretch a panel, so easier to edit a design.

The Subroutine Menu now has an option to rename a subroutine.

The Extend Menu now has an option to extend a selection with override, similar to the Shorten with override option.

Hotlighting subs shows them not as bold as before (just 2 pixels wide)

Hotlighting a line in a sub shows the rest of the sub dimmed



Emailing bug reports now zips the files

The menu for Insert Subroutine was improved, and now offers the rotation and mirror options etc.

Inserting Offset lines now allows default mode to be set (line first or offset first), and when using Insert horizontal/vertical it now allows “no snap” to be set as a default

## **DOS / Windows 95 / Windows ME / Windows 98 / Windows 2000, and Windows XP**

Versions 16.0 / 14.x did NOT support Windows 2000, so required Windows XP at a minimum. **Version 17.0 also no longer supports Windows XP**, so requires Windows 7 at a minimum.

When it comes to DOS, it is now well over 10 years since we went to a Windows platform. Apart from the fact that we basically can't remember how to run the DOS version of CimCAD / CimPACK, almost none of the hardware in our office will even run the DOS version anymore. As such, we have no choice but to stop support for the DOS version, we are no longer capable of offering any effective support for it. We would encourage anyone still running DOS to take the plunge and upgrade their hardware and software. The activators for 17 are also incompatible with DOS, just another example of new hardware basically being Windows only.

Thanks

### **Windows XP no longer supported**

This is what we said two years ago about Windows XP support : *Versions 16.0 basically still runs OK under Windows XP, granted some things are outside of our control. However, as you can imagine it has become increasing difficult to even maintain this level of functionality. Start making plans, as seems this will be the last version of CimPACK that runs on XP.*

### **Notice to CimCAD / CimPACK Customers Upgrading from a version earlier than Version 11.0 (such as. 10.4)**

Changes made to the Version 11.0 release shipped in July 2004 mean that if you have written any custom software, changes may be required. If that is the case and you need us to train you on the differences with 11.0 please contact us for a quote on that.

If you are upgrading from any 11.x version to 16.x there are no changes required, but if upgrading from Windows 10.4 to 17.x for example, then this applies to you.

If you paid us to write custom software for you, it may need some work done on it to function correctly in the new version.

Standard Laser Drivers and Router Maps supplied by Cimex will be converted free of charge, however means that we need a copy of your complete Local folder (including all sub-folders etc.) to convert, before we can ship your upgrade.

If you have any question on this, please contact us.

Thanks

## ***CimCAD Version 17.0 Windows Edition Upgrade Pricing***

From Windows Version	Current V16.1	Version 16.0	Any V15	Any V14	Any V13	Any V12
first user	\$500	\$525	\$550	\$600	\$700	\$800
additional users	\$75 per	\$75 per	\$100 per	\$100 per	\$100 per	\$100 per

Any V11	Any V10	From DOS Versions	Any Version
\$900	\$1000	first user	\$1500
\$100 per	\$125 per	additional users	\$150 per

**\*\*\* Please note that all pricing is for users at a single location, not multiple sites \*\*\***

To order the Windows upgrade, please fill out the attached order sheet and either mail or fax it to us.

**\*\*\* Version 17 only runs on a new type of USB key we have switched to, so anyone upgrading to 17 from any version of 11 or earlier needs new activators. Even if you currently have USB keys, we are now using a newer version of those USB keys, they look similar but are about ½ inch shorter than the original ones. Parallel keys have been phased out, as have activators that run DOS, these new keys will run Windows only. The older USB keys no longer used are the HASP4 keys, the newer ones for 12.1 onwards are the HASP SRM keys. If unsure you can go to Help > About CimPACK, and next to the “Activator :” entry it says which type of USB key you are currently using.\*\*\***

**\*\*\* The activator registration forms must be filled in by the end user and faxed back before we can ship any software. The activator registration form provides the necessary information needed for us to program the activators with your license information. \*\*\***



**Cimex Corporation**  
30 Front Street, Suite 2  
Belchertown, MA 01007  
Phone: 413-323-1090  
Fax: 413-323-1096  
www.cimexcorp.com

***CimCAD Version 17.0 Windows Edition Update Form***

Company Name _____
Contact Person _____
Address _____ _____
City / State / Zip _____
Phone Number _____
Fax Number _____
Email Address _____

Current version of CimCAD \_\_\_\_\_  
Number of users \_\_\_\_\_  
PO Number being used \_\_\_\_\_  
(terms are net 30)

***We wish to purchase the following:***

**CimCAD** Version 17.0 Update \$ \_\_\_\_\_  
Replacement USB activators @ \$75 each \$ \_\_\_\_\_

***Please check off the shipping method that you would prefer.***

UPS Ground \_\_\_\_\_  
UPS Blue 2 Day \_\_\_\_\_  
UPS Orange 3 Day \_\_\_\_\_  
UPS Red Next Day \_\_\_\_\_

Authorized Signature \_\_\_\_\_

Date \_\_\_\_\_

Printed Name \_\_\_\_\_

Title \_\_\_\_\_