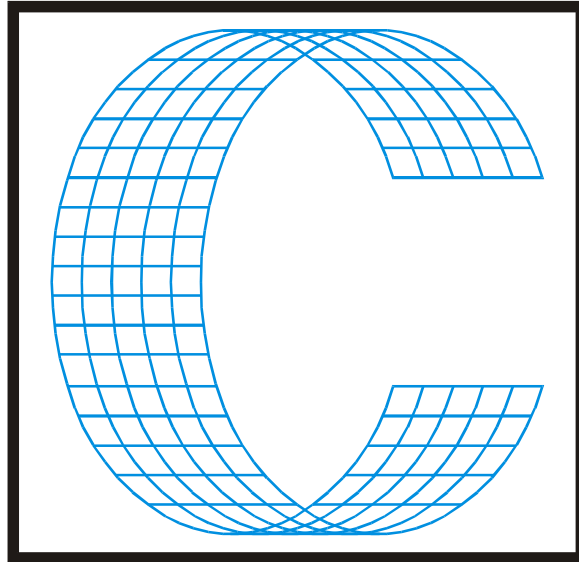


CimCAD Version 18.0



cimex®

Cimex Corporation

30 Front Street, Suite #2

Belchertown, MA 01007

USA

Phone (413) 323-1090

Fax (413) 323-1096

www.cimexcorp.com

E-Mail info@cimexcorp.com

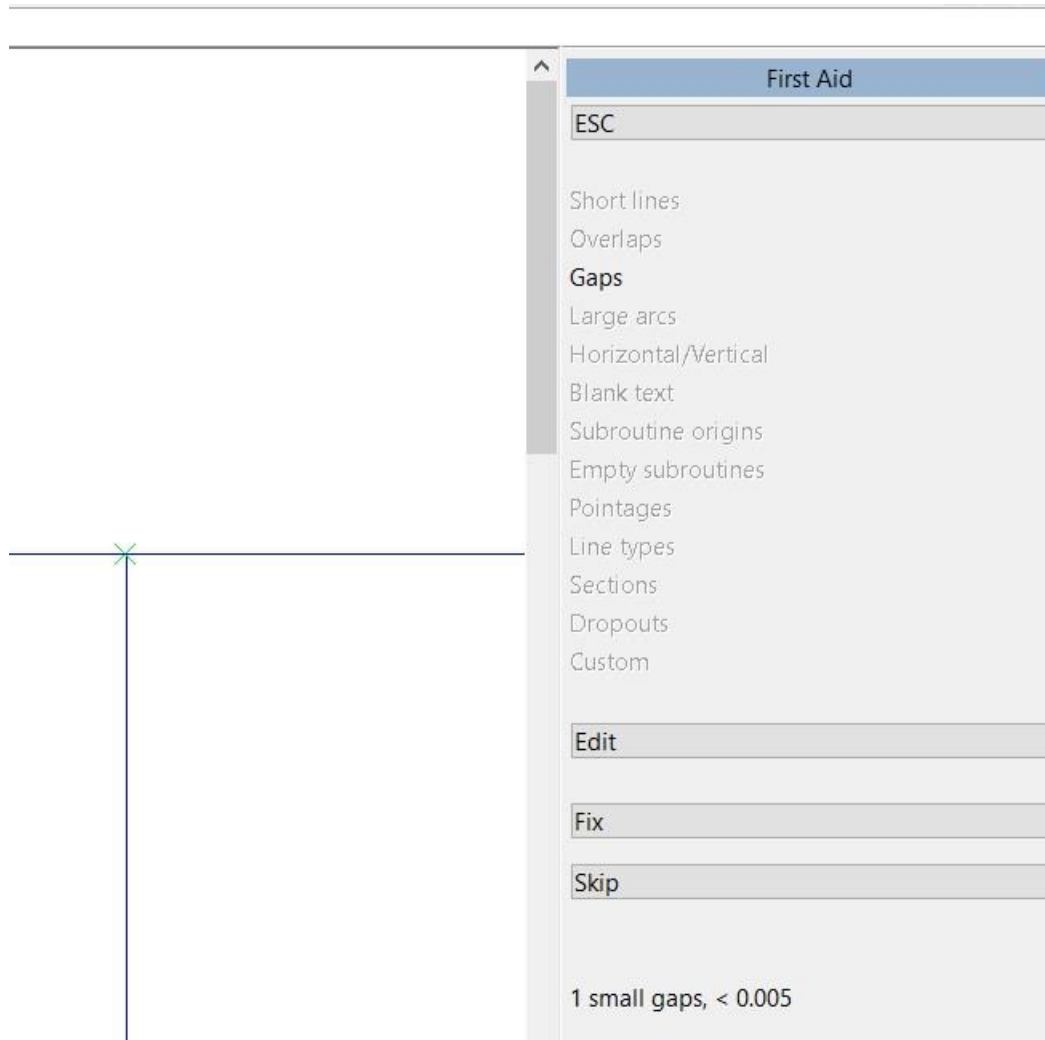


CAD Portion of the Program

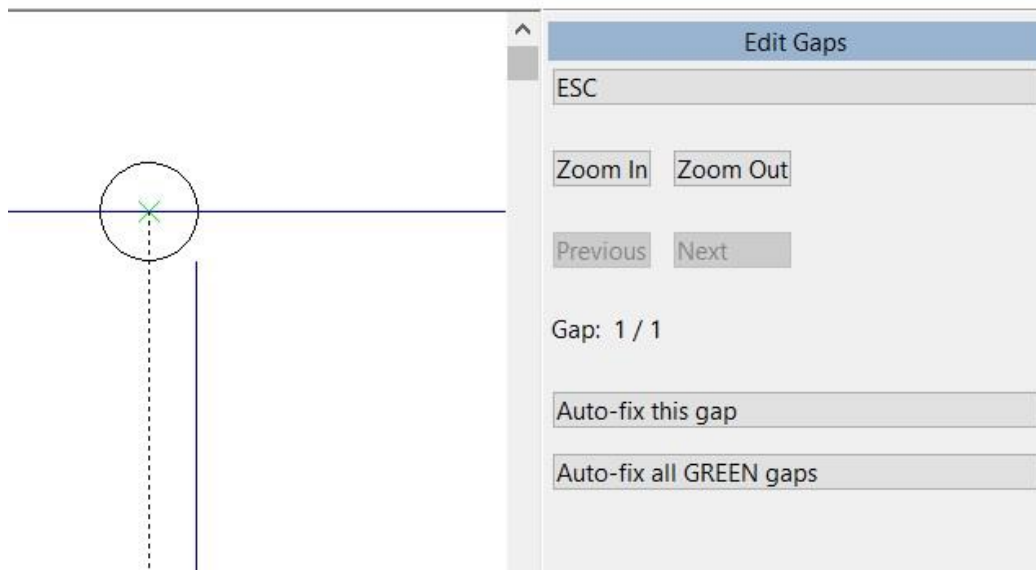
FirstAid

FirstAid is crucial for cleaning up designs, and just got a major overhaul. First off, some additional checks were added and are for looking for Invalid Linetype / Pointage combinations, and also one for checking for and highlighting Dropouts.

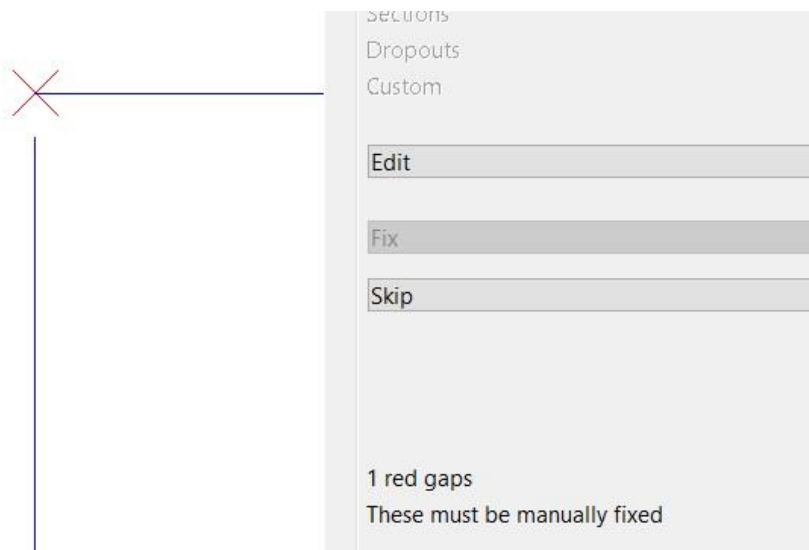
When you run FirstAid and it finds any issues, there is now a completely new interface offering your options for dealing with each issue.



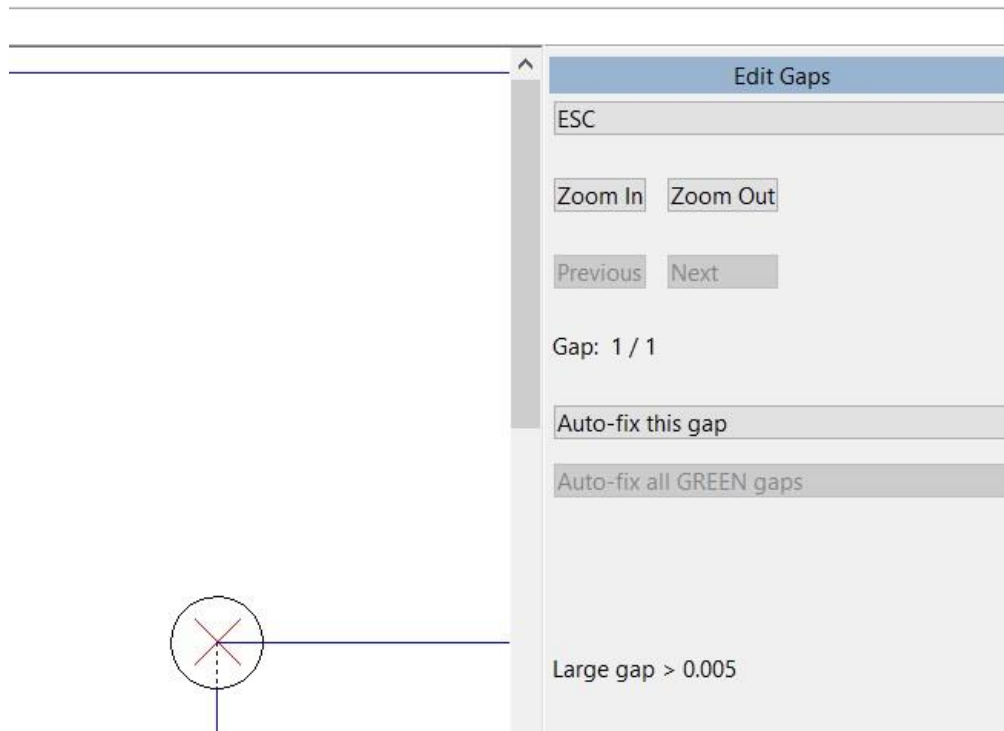
In this case the program is saying that we have 1 small gap less than the set tolerance of .005, and is highlighted on the screen with a green cross. At this point we have 3 options, go ahead and fix the gaps automatically as before, or skip the gap closure entirely, or go to a new option Edit which cycles through the gaps one by one. Here the dashed line and circle show where the line will be moved to. You can cycle through the gaps and approve the closure method in each case. To skip a closure as want to do something else there, just use the Next or Previous buttons to cycle through all the gaps. You can also just use Next and cycle through the gaps, then pick the Auto-fix all Green gaps to automatically then close all the green gaps so gaps less than the tolerance that we requested of .005.



Another new feature in version 18 does another great thing with gaps, as apart from fixing the gaps within tolerance (referred to as small gaps), it also highlights any larger gaps using a red cross instead of a green cross (referred to as large gaps).



You can use the new Edit option to see how the larger gap would be closed, and then accept that closure also, or skip it. So in summary, you can still use the improved automatic closure option on small gaps less than your tolerance, or elect to close them using a manual (interactive) method, then for large gaps over your tolerance you can elect to use the manual (interactive) method to deal with them.

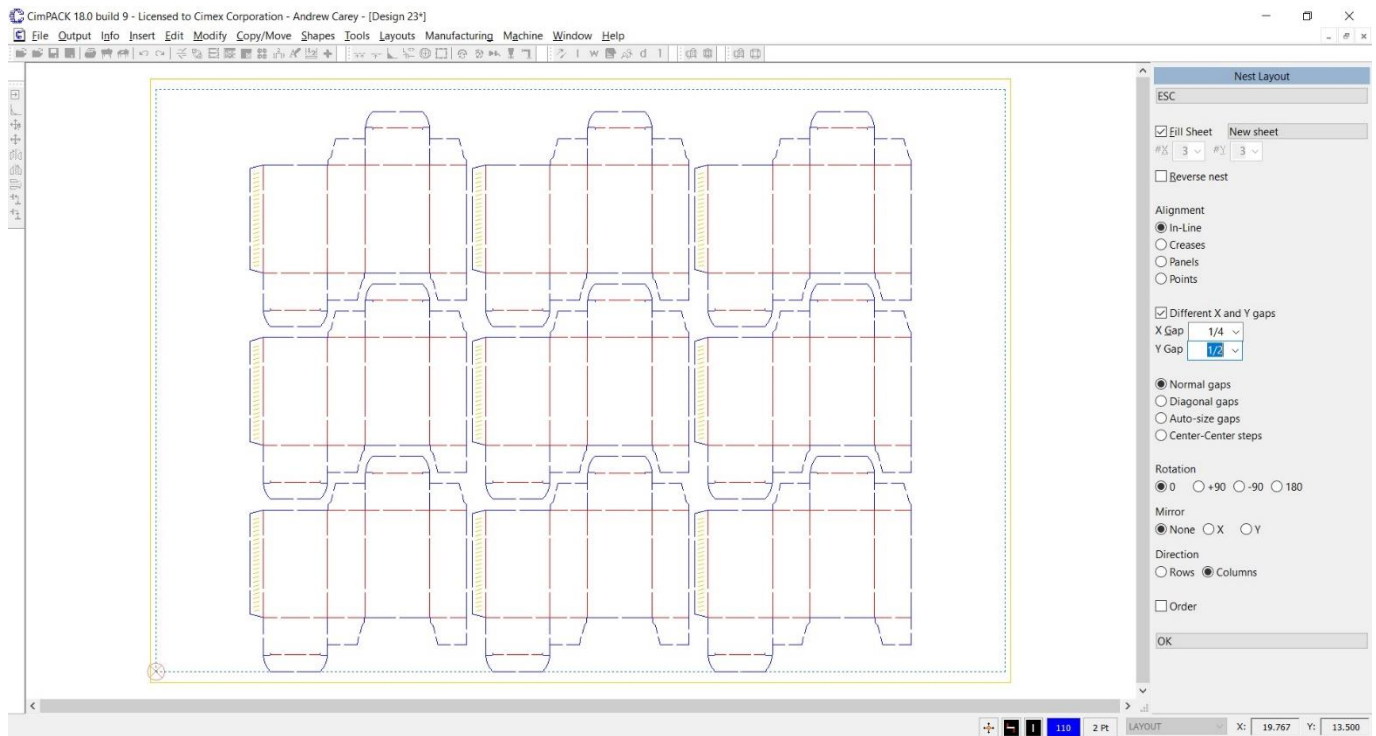


As well as using the Auto-Fix All or Auto-Fix the Current Gap, you can use hotkeys (such as S/I/E/T/K) to manually fix the current gap, if you don't like the way auto-fix would fix the gap (which is particularly useful for large gaps).

When issues are found with horizontal/vertical, the manual (interactive) method of fixing them is also used. It steps through the problem areas and you can choose which end to adjust (in 17 you couldn't fix them inside Firstaid, it just reported them).

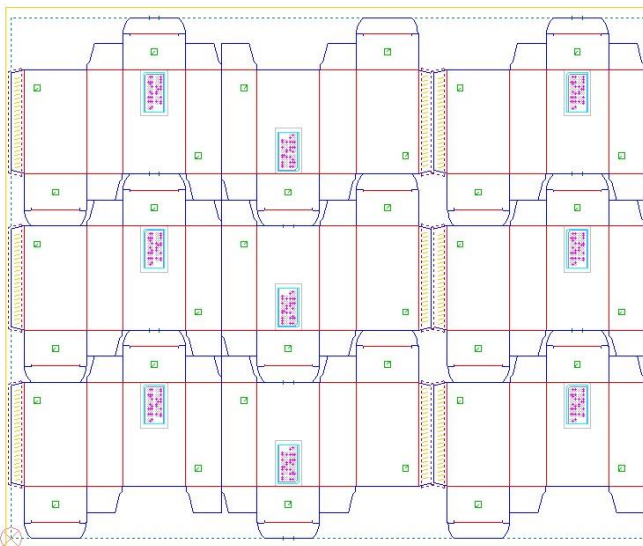
Layouts

There is now a Re-Layout option for single design layouts. It used to be that you could adjust the layout while you did it initially, but once you got out of the layout menu and returned later, the layout was fixed and couldn't be changed. Now you can change the layout later just as you could initially. Here the layout was saved as a single knife layout, but changed with Re-Layout to be different double cuts in the X and Y.

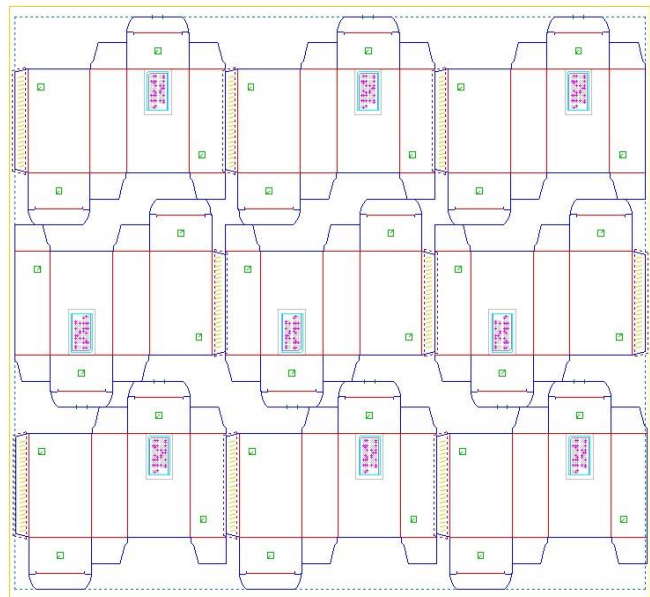


The new (in 17.0) interactive layout now allows nesting by columns (as well as by rows), so in this reverse nest example creates very different results.

By Columns



By Rows



Forms

You can now create Combo (two-sided) and Layout (two-sided layout and 1-up) forms.

When you discard a form, you are now warned that is about to happen.

The 1:1 option allows you to insert small designs into a form at a 1:1 scale rather than scaled up to fit.

Miscellaneous

Color chip - When some lines are selected, the Non-Construction button allows you to change the selection to regular lines, the opposite of the Construction button.

Insert Vector Text – an option for kerning was added to better space the letters.

NC output - Circles now all start at a bridge, including for tack bridges, which is better and helps with various issues.

Hotkeys - Alt-Arrows for copy or move in just one direction were added.

Dimensions Menu - The hotkeys D/M/S/E/T can now be used, even when prompting for a coordinate.

Sections Dialog – New options "Lock All" and "Hide All" were added.

Miscellaneous - ALT+INSERT now adds the most recent top-level command to your custom toolbar (and displays that toolbar if it is not currently visible).

DOS / Windows 95 / Windows ME / Windows 98 / Windows 2000, and Windows XP

Versions 16.0 / 14.x did NOT support Windows 2000, so required Windows XP at a minimum. **Version 18.0 also no longer supports Windows XP**, so requires Windows 7 at a minimum.

When it comes to DOS, it is now well over 10 years since we went to a Windows platform. Apart from the fact that we basically can't remember how to run the DOS version of CimCAD / CimPACK, almost none of the hardware in our office will even run the DOS version anymore. As such, we have no choice but to stop support for the DOS version, we are no longer capable of offering any effective support for it. We would encourage anyone still running DOS to take the plunge and upgrade their hardware and software. The activators for 18 are also incompatible with DOS, just another example of new hardware basically being Windows only.

Thanks

Windows XP no longer supported

This is what we said two years ago about Windows XP support : *Versions 16.0 basically still runs OK under Windows XP, granted some things are outside of our control. However, as you can imagine it has become increasing difficult to even maintain this level of functionality. Start making plans, as seems this will be the last version of CimPACK that runs on XP.*

Notice to CimCAD / CimPACK Customers Upgrading from a version earlier than Version 11.0 (such as. 10.4)

Changes made to the Version 11.0 release shipped in July 2004 mean that if you have written any custom software, changes may be required. If that is the case and you need us to train you on the differences with 11.0 please contact us for a quote on that.

If you are upgrading from any 11.x version to 16.x there are no changes required, but if upgrading from Windows 10.4 to 18.x for example, then this applies to you.

If you paid us to write custom software for you, it may need some work done on it to function correctly in the new version.

Standard Laser Drivers and Router Maps supplied by Cimex will be converted free of charge, however means that we need a copy of your complete Local folder (including all sub-folders etc.) to convert, before we can ship your upgrade.

If you have any question on this, please contact us.

Thanks

CimCAD Version 18.0 Windows Edition Upgrade Pricing

From Windows Version	Current V17.0	Any V16	Any V15	Any V14	Any V13	Any V12
first user	\$500	\$525	\$550	\$600	\$700	\$800
additional users	\$75 per	\$75 per	\$100 per	\$100 per	\$100 per	\$100 per

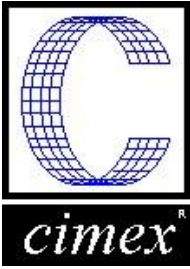
Any V11	Any V10	From DOS Versions	Any Version
\$900	\$1000	first user	\$1500
\$100 per	\$125 per	additional users	\$150 per

***** Please note that all pricing is for users at a single location, not multiple sites *****

To order the Windows upgrade, please fill out the attached order sheet and either mail or fax it to us.

***** Version 18 only runs on a new type of USB key we have switched to, so anyone upgrading to 18 from any version of 11 or earlier needs new activators. Even if you currently have USB keys, we are now using a newer version of those USB keys, they look similar but are about 1/2 inch shorter than the original ones. Parallel keys have been phased out, as have activators that run DOS, these new keys will run Windows only. The older USB keys no longer used are the HASP4 keys, the newer ones for 12.1 onwards are the HASP SRM keys. If unsure you can go to Help > About CimPACK, and next to the "Activator :" entry it says which type of USB key you are currently using.*****

***** The activator registration forms must be filled in by the end user and faxed back before we can ship any software. The activator registration form provides the necessary information needed for us to program the activators with your license information. *****



Cimex Corporation
30 Front Street, Suite 2
Belchertown, MA 01007
Phone: 413-323-1090
Fax: 413-323-1096
www.cimexcorp.com

CimCAD Version 18.0 Windows Edition Update Form

Company Name _____
Contact Person _____
Address _____ _____
City / State / Zip _____
Phone Number _____
Fax Number _____
Email Address _____

Current version of CimCAD _____
Number of users _____
PO Number being used _____
(terms are net 30)

We wish to purchase the following:

CimCAD Version 18.0 Update \$ _____
Replacement USB activators @ \$95 each \$ _____

Please check off the shipping method that you would prefer.

UPS Ground _____
UPS Blue 2 Day _____
UPS Orange 3 Day _____
UPS Red Next Day _____

Authorized Signature _____ Date _____

Printed Name _____ Title _____